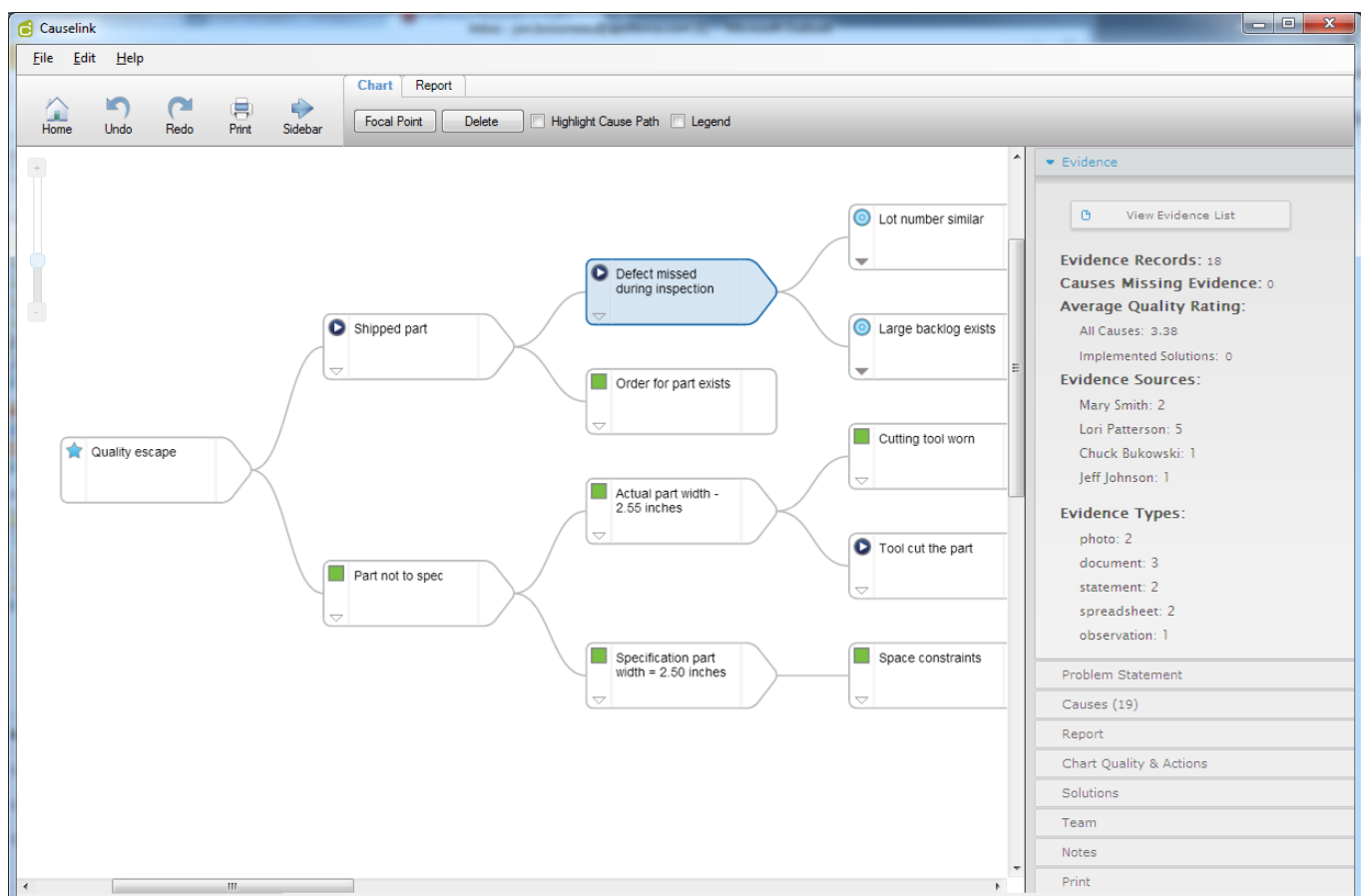


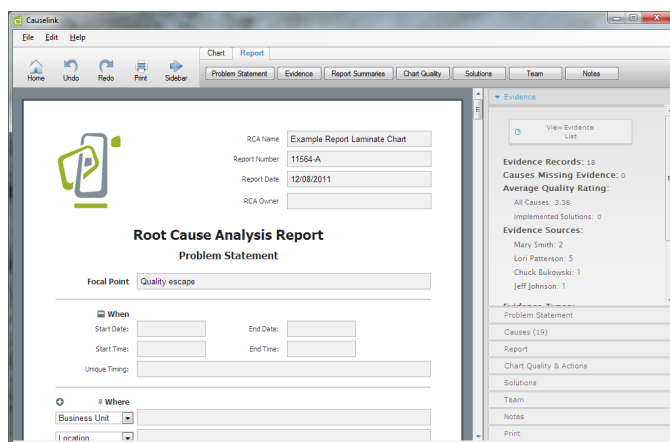
Causelink<sup>®</sup> Desktop software helps users solve real-world problems by providing a structure for root cause analysis investigations and an easy way to report results.

Users realize immediate results through deeper knowledge of the cause-and-effect relationships inherent in problems. Causelink equips professional incident investigators, facilitators, and participants to understand and document problems of any scale -- from simple to complex -- in a clean and easily understood report.



## Empower RCA Teams with Software

- Create cause-and-effect charts quickly and efficiently
- View data, relationships and cause details in powerful new ways
- Document and manage evidence
- Efficiently pinpoint evidence-based causes appropriate for effective solutions
- Understand the nature and impact of challenges
- Establish an ROI for solutions
- Share data with dynamic PDFs or export to customized templates
- Report out in language and format that captures leadership attention and generates support
- Achieve lasting positive results, reach business goals, and demonstrate ROI



## Causelink Desktop Features

- Efficient use of chart "white space." 50 causes can be displayed on one 8.5x11 page
- Generate PDFs and print clearly in various formats and sizes, including to a plotter
- Generate user-configurable reports
- View and print cause details in the chart, including evidence, solutions, actions, and notes
- "Find" keywords on the chart and report
- "Brainstorm" to rapidly add causes, evidence, actions and notes
- "Connect To" an existing cause path
- Add evidence inline on the chart
- Display branch termination icons
- Duplicate RCAs
- Print the cause type legend on the chart
- Submit and approve solution criteria with one click
- Available in English, Portuguese, Spanish, German and French

## Minimum Requirements

- **Processor:** Intel Pentium III 1 GHz
- **Operating System:** Windows 10, 8, 7, Vista SP1
- **Memory:** 512 MB of RAM
- **Software:** .NET 4.0 Framework